



META-ANALYSIS OF PREDICTORS OF ACADEMIC DISHONESTY

A WORK IN PROGRESS

PREDICTORS

- Gender
- Age
- Class
- Grade average
- Financial Aid
- Institution
- Major/Specialty
- Belief/seeing others engage in AD
- Acceptability of AD

SEARCH (IN PROGRESS)

- Any of the predictors AND Academic integrity, Academic dishonesty, Cheat*, Plagiar*
- Peer-reviewed sources: Web of Science, ERIC, PsychInfo, literature reviews of articles we find in searches, previous lit review and meta-analysis articles
- Other sources: Dissertations, AERA Online Paper Repository, academia.edu, researchgate.net, greynet.org, greylit.org, Google Scholar

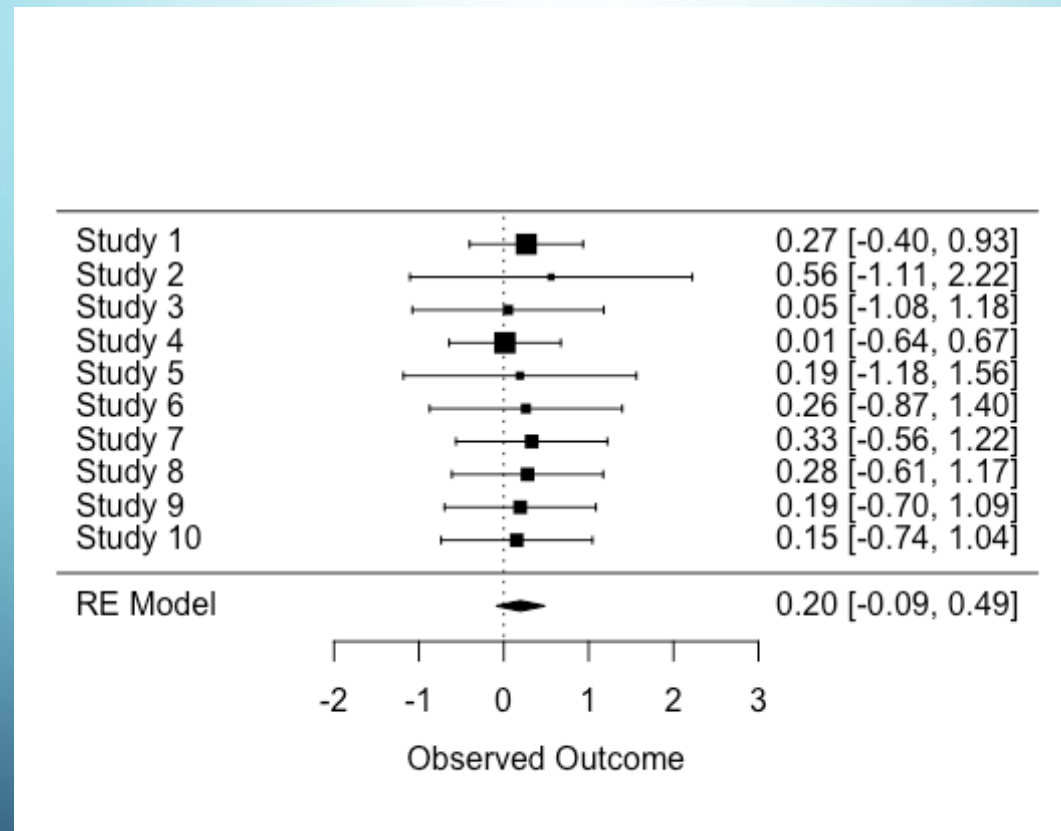
SCREENING

- Post-secondary participants
- A measure of AD behavior
- A measure of one or more predictors
- Statistical information to calculate Cohen's d
- To date: About 450 documents screened, 23 documents coded

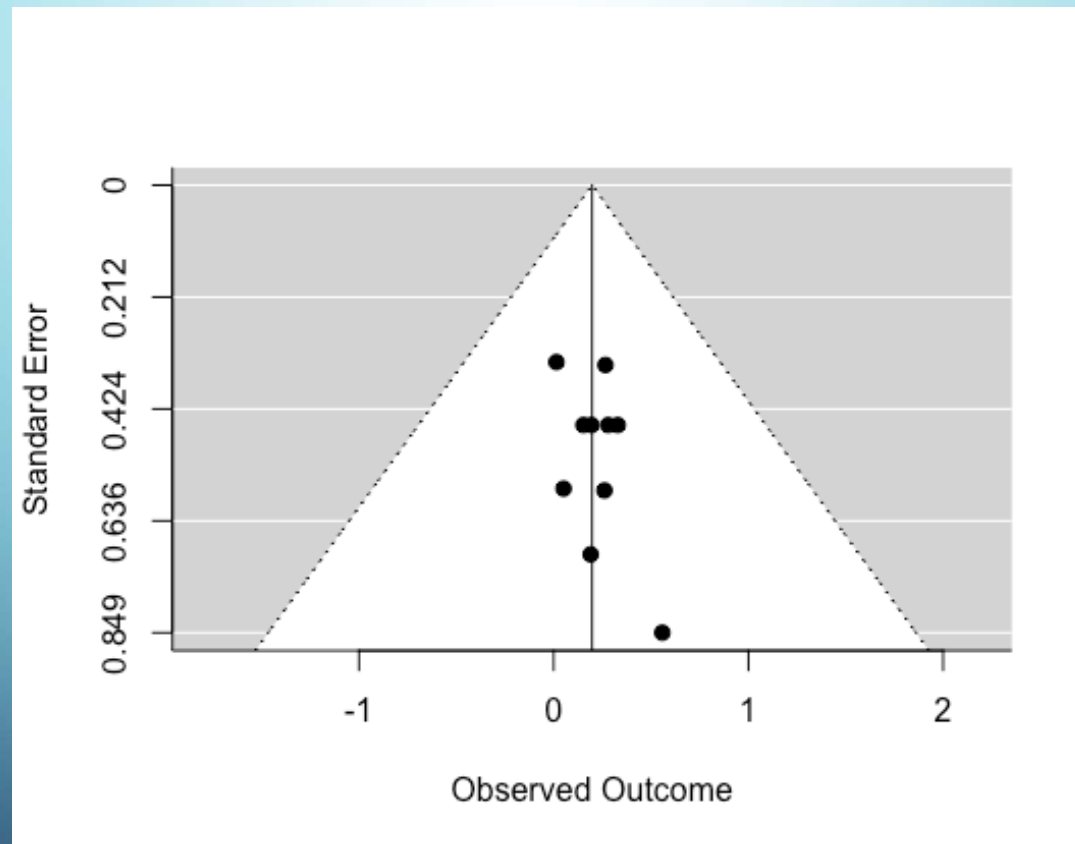
SAMPLE RESULT

- Gender based on 10 studies
 - ES (d) estimate = .197 (Males more likely to engage in AD)
 - Probability = 0.179
 - 95% Confidence interval: -0.0908 – 0.485

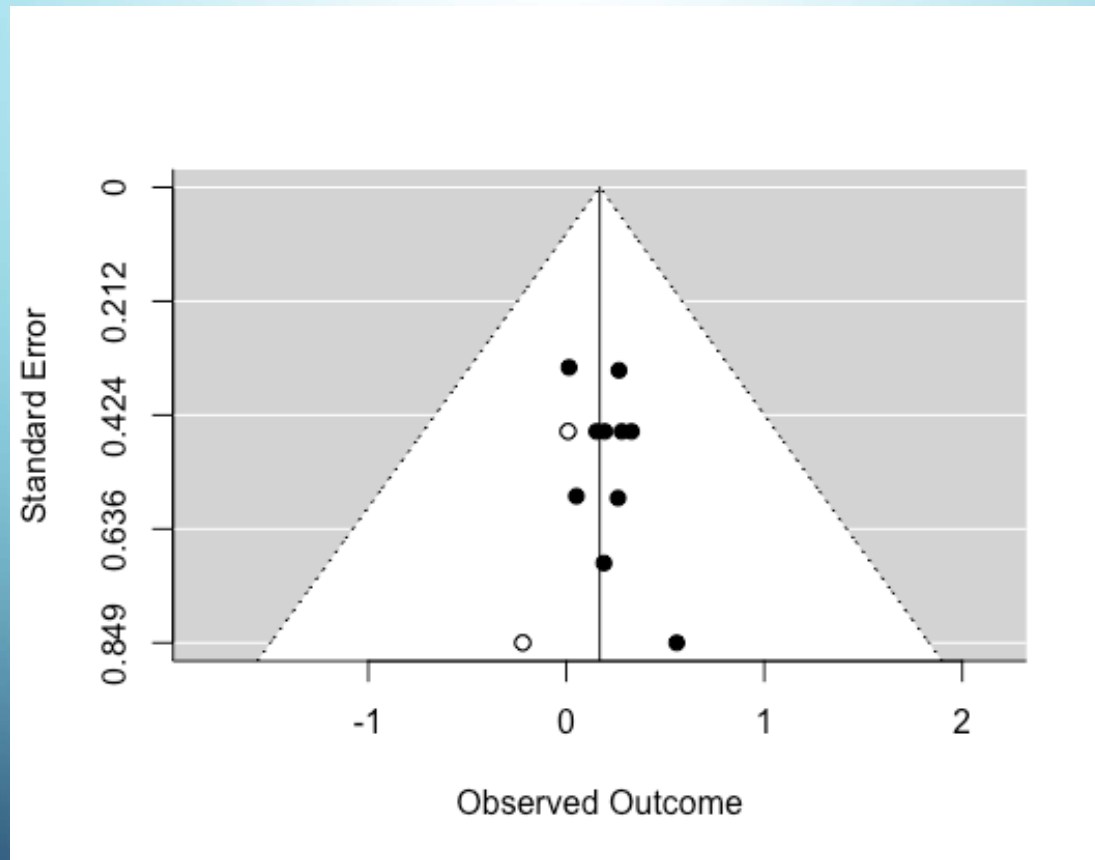
FOREST PLOT



FUNNEL PLOT



TRIM & FILL FUNNEL PLOT



THANK YOU FOR INDULGING ME

- Bob Ives – rives@unr.edu